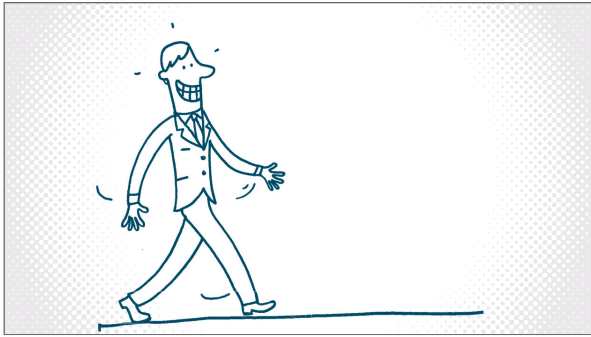


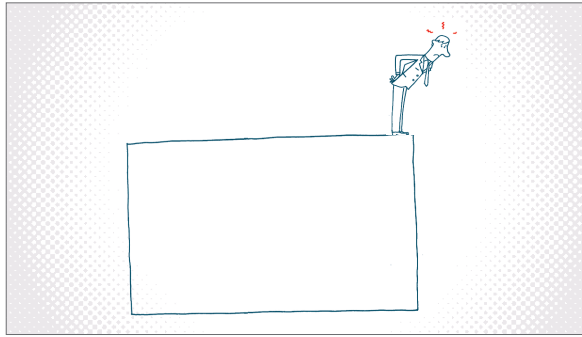
## OPEN

Duration : 30 sec / the entire animation is a sequence shot.

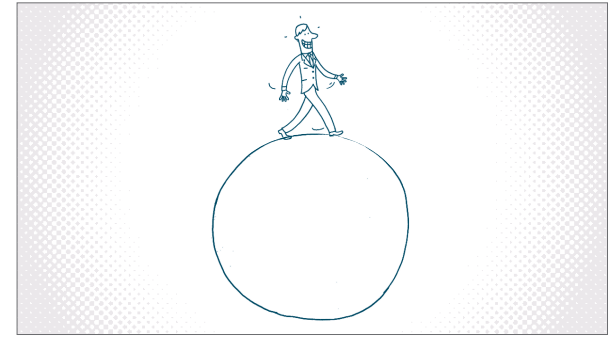
The man is walking, close up on the feet  
then long shot on the character



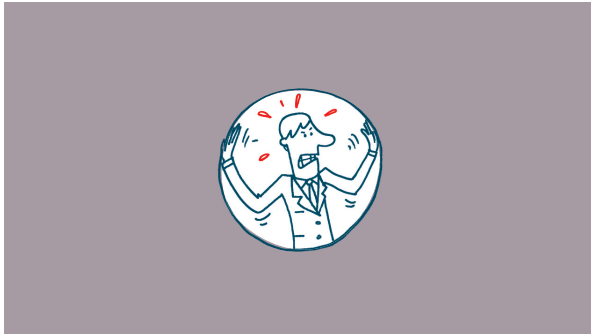
The character is stopped at the edge of the cube,



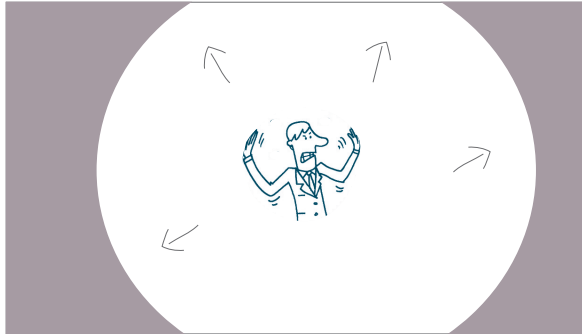
the cube turns into a sphere,  
then he can walk again



Close up,  
the screen shrinks, the character is trapped



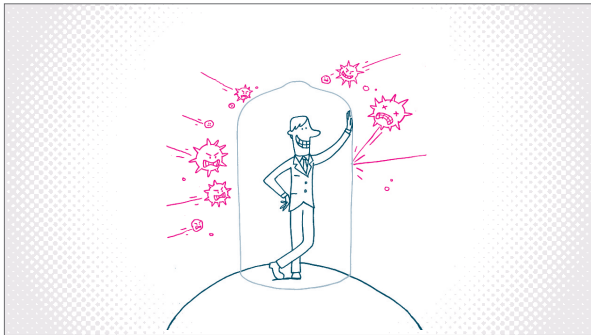
By pushing on the surface, the character gets out



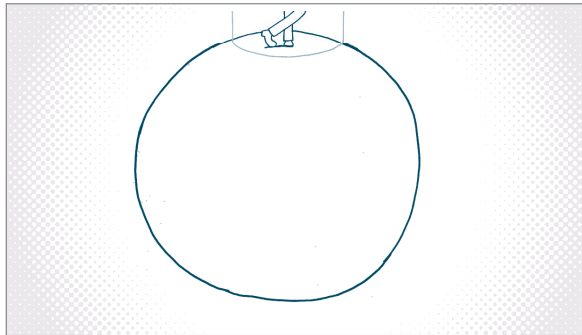
zoom out  
the character is attacked by viruses...



... but he's protected by an invisible shield



traveling to see the entire sphere



zoom out, the sphere turns into a loudhailer



Long shot - new characters join the man...



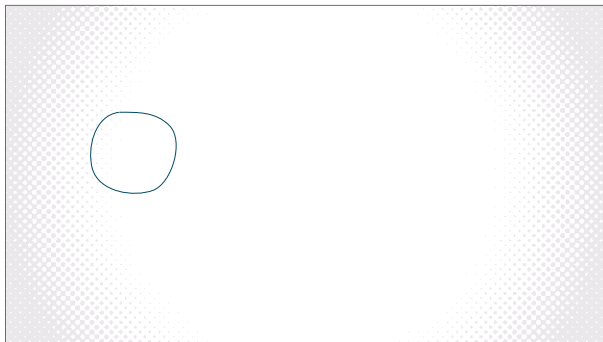
...and trees grows like mushrooms



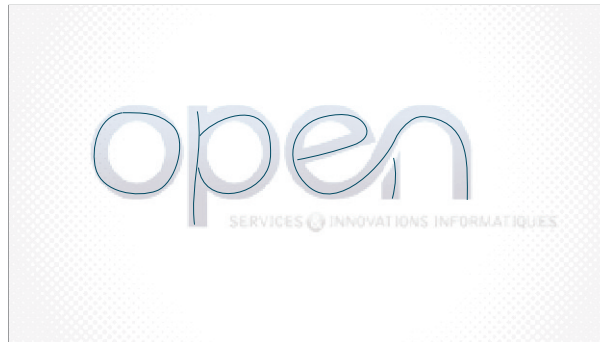
Zoom out on the sphere...



...to turn into the "o" of the brand name



the other letters appears



and the logo and the baseline fades in



